

Γράψτε τις παρακάτω κλίμακες βρίσκοντας τον οπλισμο τους. Βάλτε τις αλλοιώσεις δίπλα στις νότες.

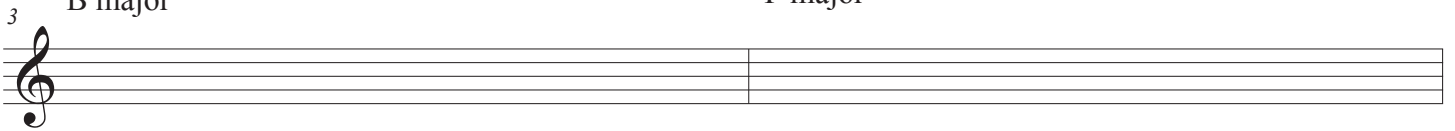
G major

E major



B major

F major



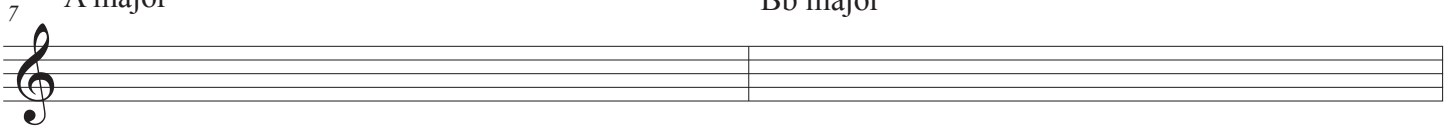
E \flat major

D \flat major



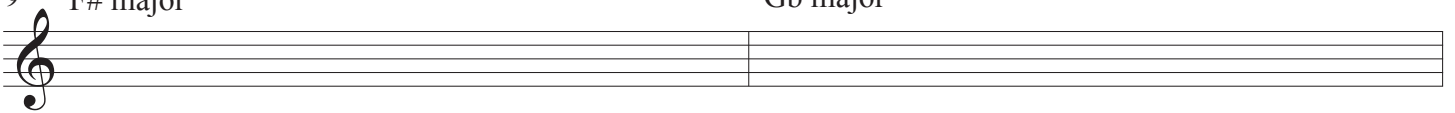
A major

B \flat major



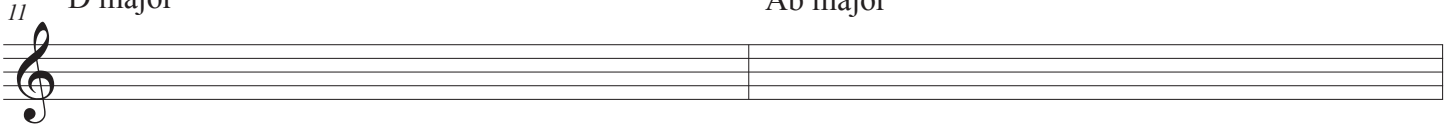
F \sharp major

G \flat major



D major

A \flat major



C \sharp major

C \flat major

